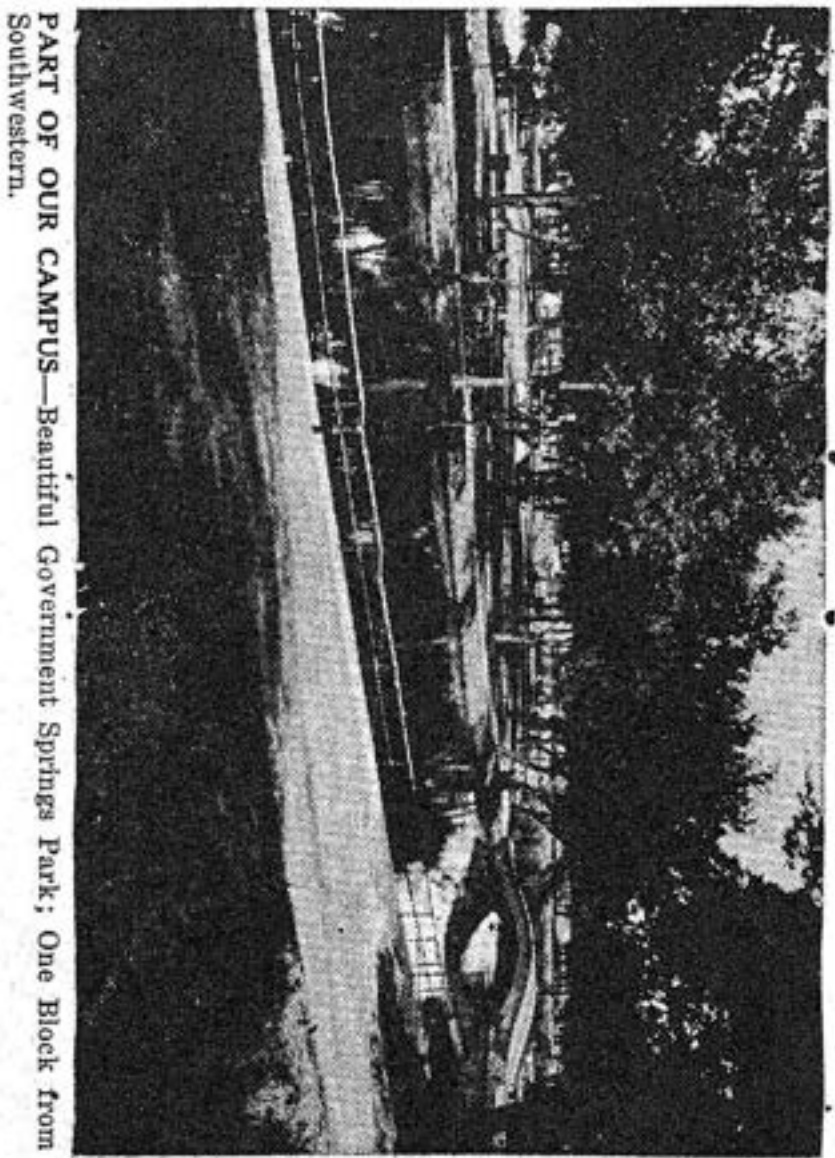


# BULLETIN

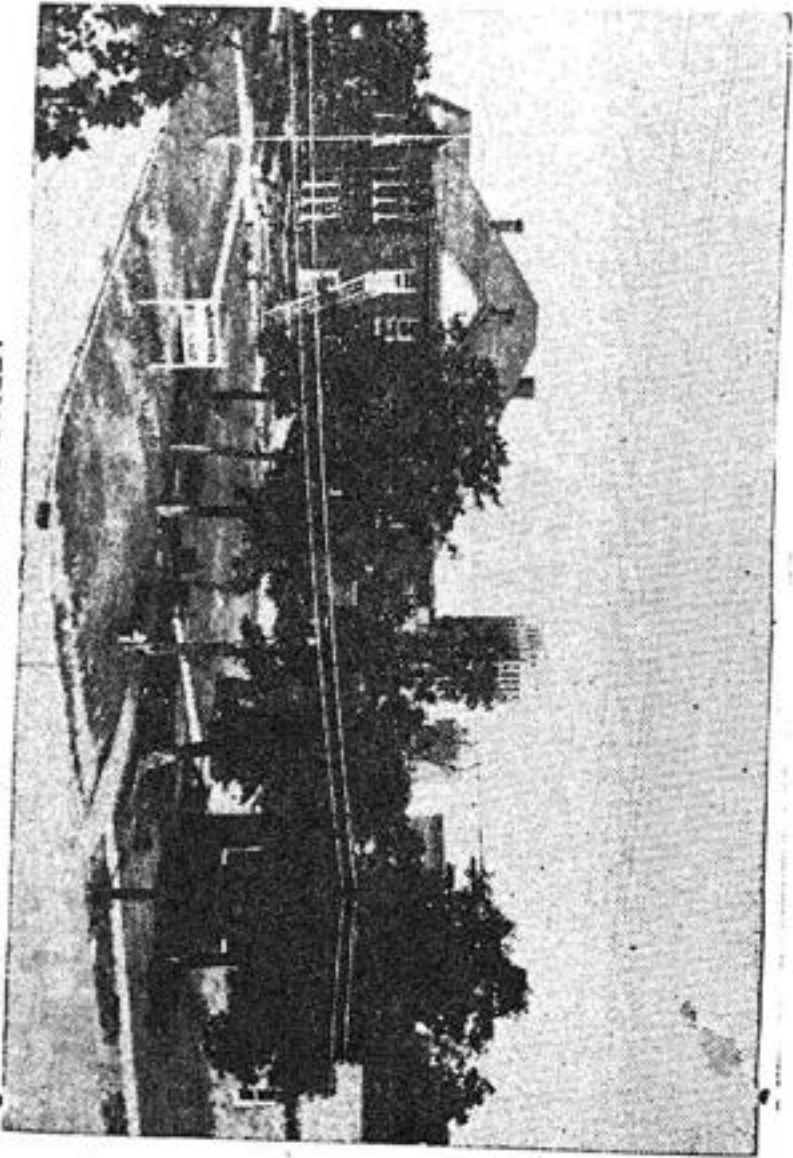
## Southwestern Bible School

Enid, Okla.



PART OF OUR CAMPUS—Beautiful Government Springs Park; One Block from Southwestern.

Showing: Main Building (Girls' Dormitory) Boys' Dormitory, Enid Sky-line in distance.



1940 - 1941  
FOURTEENTH ANNUAL  
**BULLETIN**  
OF  
Southwestern Bible School

300 Block East Cherokee Ave.  
ENID OKLA.



Main Building—Southwestern Bible School

## FACULTY



P. C. Nelson, President  
Special Lectures.



Annie Bamford, Vice-President, Dean of  
Women  
Personal Evangelism  
Life of Christ  
Head of Department of Music.



J. Paul Ireland, Dean of Men, Director  
of Music  
Voice Culture  
Orchestra  
Choral Music  
Rudiments  
Conducting.  
Radio Productions.



Robert L. McCutchan  
Prophecy.  
Old Testament  
Typology  
Articulation  
Bible Introduction  
Sunday School Efficiency  
General Epistles  
False Cults



Cecil J. Lowry  
Doctrines  
Dispensational Truths  
Pastoral Theology  
Pauline Epistles  
Church History  
Evangelism.



Lottie Lee Flowers  
Bible Atlas  
Acts of the Apostles  
Homiletics  
Missions  
Public Speaking  
Poetical Books  
Greek  
Hebrew.



Klaude Kendrick  
English  
Parliamentary Law  
Hermeneutics  
Spanish.



Mary McCutchan  
Piano.

In addition to the above, a number of assistant teachers are employed.

### HISTORY

In the providence of God, the foundation for Enid Gospel Tabernacle, Assembly of God, and Southwestern Bible School, was laid in several evangelistic campaigns conducted by the Nelson Evangelistic Party in Enid, in the years 1921—27. The party consisted of P. C. Nelson, Mrs. Nelson, and their son Merrill A. Nelson and Mrs. Annie Bamford, who joined this party in 1921. In April 1927, the party returned to Enid, after a series of engagements on the Pacific coast, just in time to purchase the Central School building—a large red brick structure, with three hundred feet of land fronting on East Cherokee Ave., on top of a hill which had long been called "Piety Hill" On the 6th of May, 1927, the assembly was set in order, and then voted to purchase this property, and raised a small fund for the purpose.

During the summer of 1927 the Tabernacle which P. C. Nelson had built on East Broadway, was taken down and rebuilt adjoining the school building on the west. The school building was repaired and renovated and prepared to house the new Bible school which opened the same fall. The assembly worshiped in the school building while the tabernacle was being rebuilt. The Nelson party constituted the nucleus of the original faculty. The student body the first year was small—only forty-four registered that year—but a solid foundation was laid for a great institution. The faith of the founders, teachers and students was tested in various ways the first year, but by the mercy of the Lord, triumphed over all difficulties.

In 1929, the men's building was erected, and has since been used as a dormitory for men, and as kitchen and dining room for the whole school. Other equipment has been added from time to time. The school has steadily gained in numbers. During the past thirteen years has enrolled 3,458 students, who have come from nearly every state in the Union and from Canada and from Central America.

### PURPOSE

The purpose of the school is to give men and women a better knowledge of the Word of God, and to bring them into closer fellowship with Christ, and into harmony with His will for themselves, whether that be to serve Him in their own homes, on the farm, in shop or store or office, to minister in the pulpit as pastors or evangelists, or to carry the glad tidings across the seas.

Believing that the Return of our Lord is drawing very near, an earnest effort will be made to give His heralds the most essential knowledge and training in the briefest possible time.

The school has its eye especially on the Southwest as a harvest field of rare opportunity, but its vision is world-wide, and its sympathies are with every worker whom the Lord has sent into His harvest field.

### ALIGNMENT

From the beginning Southwestern Bible School has been aligned with the Assemblies of God, whose "Statement of Fundamental Truths" has been the doctrinal basis. This doctrinal declaration may be found in the Minutes of the Oklahoma District Council of the Assemblies of God and in the Minutes of the General Council of the Assemblies of God. These "Fundamental Truths" have been elaborated and elucidated in "Bible Doctrines" by P. C. Nelson.

### REQUIREMENTS FOR ADMISSION

A good moral character, a real experience of the saving grace of Christ, an earnest purpose to be trained for Christian service, whether in the pastorate, the evangelistic field, the home or foreign missionary field, or other forms of Christian service, whether in public or in private are indispensable requirements. Applicants who have not been filled with the Holy Spirit will be encouraged to earnestly seek this endowment for service. A willing, teachable spirit, submissive to the rules of the school, and in harmony with its purpose also is essential. Those who are not in accord with the purpose and spirit of Southwestern will not be permitted to remain in the school. Attendance is a privilege, and the management reserves

the right to reject any applications which do not measure up to these requirements.

A good high school education is very desirable, but applicants whose scholastic training has been cut short, will not be barred on that account, and every effort will be made to help students with limited training to overcome this handicap. A college education, if consecrated to the service of Christ, can be made a great help to the student who wishes to go deeper into the subjects taught. The large library will afford special opportunities for all who are qualified to do research work, and thus enrich their lives.

### LIBRARY

By far the largest library in Pentecost, consisting of 17,000 selected volumes, and ever increasing, is available to teachers and students alike.

In order to keep the books in repair, and to add to this great collection of books, many of which are of priceless value and no longer obtainable, the students are required to pay a library fee of three dollars per year. The teachers use the library as an aid and extension of the work of the class-room, by assigning subjects to students for special study and extended reading. This library affords diligent students opportunity to acquire much useful knowledge not included in the regular course of study, and to become acquainted with the best works on the various subjects.

### CALENDER

1940 - 1941

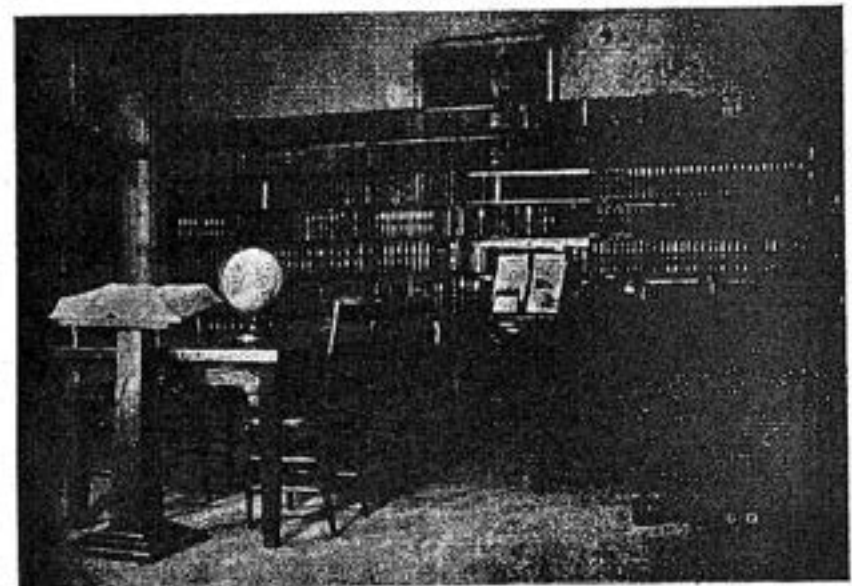
September 30, Monday, Registration Day. Fall Term begins.  
 November 27, Wednesday, Thanksgiving Holiday begins.  
 December 2, Monday morning, Thanksgiving Holiday ends.  
 December 20, Friday noon, Christmas Holiday begins.  
 January 2, Thursday, Winter term begins.  
 March 4, Thursday, Winter Term ends.  
 March 4, Tuesday, Winter Term ends.  
 March 5, Wednesday, Spring Term begins.  
 April 10, Thursday noon, Easter recess begins.  
 April 14, Monday morning, Easter recess ends.  
 May 6, 2:30 p. m., Baccalaureate Service.  
 May 6, 8:00 p. m., Commencement.

### METHOD

With teachers who are imbued with the evangelistic and missionary spirit and who spend part of their time in active evangelistic work, and with the cooperation of other evangelists, the students may take part of their training in the field of actual service under the instruction of evangelists in full sympathy with them and anxious to help them in every possible way to become efficient ministers of Jesus Christ.

### SPECIAL LECTURES

A unique feature of this school will be the presentation of several special courses of lectures by outstanding men and women who will spend from one week to three weeks each giving in the most condensed form, fruits of careful study and wide experience. As a rule these visitors will address classes in the mornings, and students and the public at night. This will afford exceptional opportunities to laymen and ministers whose work will permit them to spend only limited time here.



IN THE LIBRARY

### COURSE OF STUDY BY SUBJECTS

**Bible Doctrine**—A careful and inspiring study in the great fundamental doctrines of the Bible.

Bible Doctrine is the foundation and the very substance of Gospel preaching. This study, so highly commended in the Word, feeds the soul as well as illuminates the mind, and will guard the student from falling into the pitfalls of destructive errors.

**Pauline Epistles**—Analysis, structure, doctrinal content, and practical application of the Epistles of the Apostle Paul.

This study will enrich and inspire every faithful, diligent student; and will supply the preacher with choicest sermon material.

**Dispensations**—A study of the whole Bible, showing how God has dealt with mankind in the various periods of the biblical history of the race.

This study throws a flood of light on many portions of the Scriptures, which, without this help, we might never be able correctly to interpret.

**The Life of Christ**—Systematic and comparative studies in the Gospels, in the light of other portions of the Word, all reflecting the character, mission, messages, miracles, and triumphs of our Lord. The very heart of the Bible.

**Acts of the Apostles**—A careful study of the origin of the assembly, the history of the apostolic church, and the life of Paul and the other apostles.

**Pastoral Theology**—A study in the Epistles to Timothy and Titus, as a guide to the character and conduct of ministers of the Gospel and a consideration of practical problems connected with the pastoral office.

**Survey of the Old Testament**—Selective studies in the Old Testament, the Bible of our Lord. Creation, and the beginnings of human history. God's dealings with the chosen people, illustrative of His dealings with the church.

**Typology**—The foreshadowing of Christ and His Bride in types, forms, shadows and ceremonies, as given in the Old Testament. A most fascinating study.

**Bible Introduction**—In this study the history of our Bible is traced from the earliest manuscripts to our present-day English versions.

**False Cults**—A study of modern religious cults which do not conform to the plain teaching of the Word of God.

**Articulation**—Exercises in true pronunciation of English words frequently mispronounced, and of clear enunciation.

**Church History**—The course of church history since the days of the apostles. How errors came in; heroes and martyrs; the Dark Ages; and the Light of the Last Days. This subject is so interwoven with secular history, that it is impossible to understand one without the other. A most interesting, profitable study.

**Missions**—The history of missions and biography of missionaries. Preparation for effective missionary service.

The marvellous story of the missionary movement during the past century makes one of the most thrilling chapters in human history. This study has changed many a student's attitude and objective.

**English**—Studies in grammar and rhetoric and English composition, and other common school branches for those who are deficient in these subjects.

A thorough knowledge and ready use of good English is useful in ordinary conversation, and is essential to every public speaker, and necessary to every writer. This knowledge will open doors of usefulness which otherwise would be closed.

**Homiletics**—Studies in the preparation and delivery of sermons. Selection and analyses of texts. Outlines of sermons presented for discussion and criticism.

**Effective Speaking**—The object of this course in the art of public speaking is to enable students to express themselves clearly, impressively, and convincingly; and to teach them the proper use of the voice.

The aim is to bring out latent gifts to be used in the Lord's service, and to eliminate mannerisms and idiosyncrasies which would hinder the message and lessen its effectiveness.

**Poetical Books**—Devotional studies in Job, the Psalms, Proverbs, Ecclesiastics, and Song of Solomon. Some of the most practical wisdom, of the deepest philosophy, and the most wonderful poetry known to man forms the substance of these marvellous, inspired books. They are gold mines, and earnest labor will yield a rich mintage.

**Evangelism**—The conduct of revival meetings. The need of evangelism in our day. The kind of evangelists needed. Selecting fields of labor. Music, advertising, etc.

**Hermeneutics**—A study in the principles of correct scriptural interpretation with practical applications.

**Personal Evangelism**—Or "Personal Work". How to win souls for Christ. Rules to be followed and mistakes to be avoided. The use of the Scripture, and the Scripture to use.

**Parliamentary Law**—Rules of Order, Conduct of Assemblies. Constitutions, qualifications and duties of officers; church forms, civil law relating to the church.

**Bible Geography**—Topography of the Holy Land. Location and description of regions, rivers, lakes, mountains, plains, towns and villages, all throwing light on the biblical record.

**Sunday School Efficiency**—Also called "Sunday School Organization"—A systematic study of the Sunday School as an adjunct of the assembly and the best methods for organizing and developing the same.

**Prophecy**—Studies in the prophecies concerning Christ already fulfilled and the predictions which are soon to come to pass. Prophecies concerning Israel and surrounding nations. A subject of surpassing interest.

**Music**—Both vocal and instrumental music are included in this course without extra charge, but small fees are charged for private lessons. As in Bible times, both vocal and instrumental music had an important place in public and private worship, so in the Pentecostal movement music is a prominent feature in our work, and all workers should cultivate their gifts.

Those playing instruments before they come, may join the large S. B. S. orchestra, and those who desire to learn certain instruments, after a few private lessons, may be able to take their place in the orchestra and by constant practice under a skilful director may become very proficient in a comparatively short time.

Working in connection with Brother Ireland and "Mother" Bamford are several students who are experts on various instruments and give private lessons. These instruments include wind, stringed and reed instruments of many kinds.

### ELECTIVES

Students who are able to do more than the prescribed work are permitted to take one or more of the following electives:

**Greek**—A good knowledge of this wonderful, flexible, expressive language spoken by Christ and His apostles, the original language of the New Testament, is the greatest aid to correct interpretation. The course includes a study of Greek grammar, and the reading of selected portions of the New Testament.

**Hebrew**—The language of the patriarchs and the ancient prophets and sages who wrote the Old Testament. What a privilege to see with your own eyes the Bible which our Lord Jesus used and read! The course includes the study of Hebrew grammar, and the reading of sections from the Old Testament.

**Spanish**—Students preparing to go as missionaries to the Spanish-speaking countries, and those who expect to labor in the states adjoining Mexico should take this course, which includes a study of Spanish grammar and in reading Spanish.

**French**—A course in elementary French grammar, with some practice in reading, speaking and translating this beautiful language is provided particularly for students who expect to do missionary work in the French-speaking parts of Africa and Louisiana.

**Daily Vacation Bible School**—There is a growing demand for well trained workers to conduct such schools in connection with our assemblies, and for this reason this elective course has been provided.

**Missionary Sewing**—A most practical preparation for ministry at home or abroad. This includes instruction and practice in making of useful garments, and all kinds of sewing.

**Journalism**—Introduction and practice in writing newspaper announcements, reports, articles and stories for publication. A most useful, practical study for Christian workers.

### COURSE OF STUDY

#### FIRST YEAR

Life of Christ	Old Testament Synthesis
Personal Work	Bible Atlas
English	Typology
Dispensations	Articulation
	Vocal Music

#### SECOND YEAR

Bible Introduction	Bible Doctrines
Homiletics	Acts of the Apostles
Church History	English
Prophecy	Sunday School Efficiency
Pauline Epistles	Parliamentary Law
Evangelism	False Cults
	Vocal Music

#### THIRD YEAR

Hermeneutics	English
Missions	Homiletics
Prophecy	Bible Doctrines
Pastoral Theology	Poetical Books
General Epistles	Pauline Epistles
Public Speaking	Vocal Music

N. B. The course of study given here is that of last year and changes may be necessary.

### BUSINESS BRANCHES

Every minister in our day should know how to use a typewriter, and sometimes shorthand is a great convenience. It is well for ministers to have a knowledge of bookkeeping, commercial law and proper business methods. For this

reason Southwestern maintains a commercial department. To support this department, those who wish to avail themselves of this additional instruction are charged \$10 extra for the school year, whether they take one or more subjects.

### CREDITS

A careful record of the subjects taken and the scholastic marks of each student will be kept. A statement showing the work completed will be given to the student at the end of each term.

At the end of each year, certificates will be publicly given to those who have completed a full year's work.

However, the complete course requires three years. Diplomas will be given to those who shall satisfactorily finish the three years' course.

### SUPERVISION

In any well ordered home some rules are necessary. This is all the more true in an institution of this kind. It is the intention of the faculty to make only such rules as are absolutely necessary. Students are expected to cheerfully obey the rules.

The girls will be under the direct supervision of the Dean of Women, and the boys under the supervision of the Dean of Men. Wise parents would not send their sons, much less their daughters to a school where there is no supervision. It is necessary for the management to know exactly where all the students are at all hours of the day and night, and what they are doing.

### TUITION AND FEES

All students are required to pay a registration fee of \$5.00. This should be sent along with the application, and will be returned in case application is not accepted.

The year is divided into three terms. For the Fall term the tuition is \$12.00; for the Winter term, \$10.00; for the Spring term, \$8.00—\$30.00 for the school year. If paid in advance for a year a discount of \$5.00 is allowed, making the annual tuition only \$25.00.

The special fees are as follows: Library, \$1.00 per term



\$3.00 for the year. Breakage or replacement fee, \$1 per term, \$3.00 for the year. Laundry fee, \$2.00 per term \$6.00 for the year. Room and board \$3.50 per week; if paid four weeks at a time in advance, a discount of 50¢ per week will be allowed. The required books and notes for the first year come to \$10.45; for the second year \$10.70; for the third year, \$7.00. The school expenses for students who room and board outside the dormitories amount to about \$40.00 per year, books additional. All single students are expected to live in the dormitories. Exceptions must be by special arrangements with the management. The school has no suitable quarters for married couples or families.

### \$115 FOR A SCHOOL YEAR

To encourage all students who can possibly pay cash in advance, the charges for **board, room, registration, tuition, library, breakage and laundry** fees have been grouped under a lump sum of only **\$115**, all cash in advance, for the whole school year! This is probably the lowest figure in any Assembly of God school. This does not include books or board during holiday vacation. Prospective students should do their utmost to secure this amount and make the big saving.

There are other charges that are not listed in the above offer because they vary so much with the different students: Private music lessons, vocal or instrumental, 50¢ per lesson; Typewriting and shorthand, or either, \$4.00 per term or per year in advance, \$10.00.

All students who live in the dormitories are required to do one hour's work per day to keep the buildings and grounds in order. Students living outside the dormitories are charged a fee of \$1.00 per month or \$7.00 per year. First and second year students are charged 50¢ for certificate and third year students \$1.50 for diplomas.

While it is best for students to have resources adequate to their needs while in school, thus enabling them to give all their time and strength to their studies and school activities, we believe that exceptional opportunities are afforded students of Southwestern for earning part or all of their support.

The institution is situated so near the center of a live city that it is possible for a number of students to find work at good wages for part of their time. Most of the classes meet in the morning, leaving the afternoons free for study or work.

During recent years it has been difficult for young men to find part time employment, and it is not advisable for young men to enter school without funds or assurance of employment. About sixty of our girls annually obtain part-time work in homes, but not many are able to earn all of their expenses. Those who wish to enter, and are short of funds should use their utmost endeavors to find work and save money before they come. Applicants who are accepted will receive form letters relative to the outfits they should bring. Girls will receive instructions concerning uniforms.

Those who are compelled to put in full time laboring to gain support for themselves and those dependent upon them, may be able to attend the special lectures at night.

Those desiring to enter Southwestern should write the President for application blank. Application should be filled out and returned with a registration fee of \$5.00. In case the application is rejected this will be returned. If the application is accepted this advance payment will secure a place in the dormitories. In case the applicant should fail to come, this advance fee will be forfeited.

Please feel free to write for any desired information to

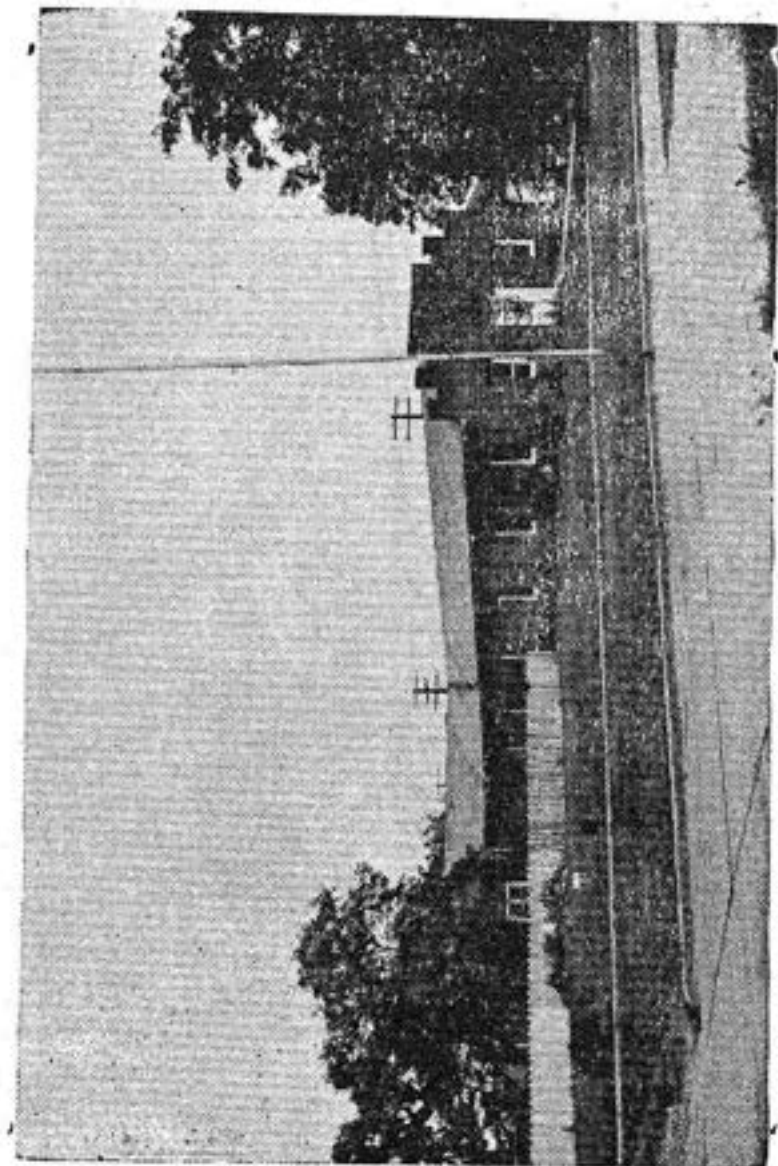
P. C. NELSON

316 E. Cherokee

Enid, Oklahoma

GRADUATING CLASS OF '40

BELL GIFFAN	MARY WEISER	GOMER WALKER	EDITH FRANCE	PHIL STARBUCK	MARJORIE WILSON	NEVA PUGH	PAUL PUGH
BERT RIEBLOW	ZELMA SHAW	INEZ MILLER	JOHN S. ALLEN	MADLEINE SELLARS	DOROTHY ELLIS	BETTY GRIER	HAROLD CHRISTY
		<p>CONQUERORS</p> <p>"TRUST HIM EVERY FAR HE NEVER"</p>					
DALE BEENE	GOLDFIE STOOKTON					EUDICE WALKER	MAXWELL COOK
FRED ADKINSON	FRANK LUNKEN	MERA DEWKA	LAIVETA SELLARS	BLANCHE SELLARS	LOIS PINE	LIDA HARTWIG	ROY WEST
MARJORIE	MILDRED KORSE	ARNT UDLEY	ETHEL HUSTON	VERA REESE	MARIA LAWRIE	MAUDE JOHNSON	KENNETH SLOAN
TUCKER	EDNA LYTTOM	OLIVE LEICHTER	MARGIE SHAW	ARNYCE BROWN	DORIS WILSON	VIVIAN MORGAN	HENRY NAZARENO
TURNER	THELMA HOLMES	LUCILLE GREEN	ESTHER CROSS	CHARLOTTE STONE	LOIS DAVIS	LUCILLE LONG	DAVID MCCALL



BOYS—This will be your home at Southwestern Bible School