

Degree Path: B.A. in Worship Arts – Technical Arts

College of Music and Communication Arts

Freshman Year

Fall Semester	14 hours
GES 1122	Strategies for Student Success ∞
ENG 1113	Composition and Rhetoric I ∞
MTH 1113/1123	(Math option) ∞
PSY 1153	Introduction to Psychology ∞
REL 1173	Intro to Biblical Literature ∞

Spring Semester	14 hours
ENG 1123	Composition and Rhetoric II ∞ (prereq: ENG 1113)
COM 1143	Fundamentals of Speech ∞
PED 2232	Wellness & Lifestyle ∞
MED 2123	Introduction to Media Production ◇
THE 1223	The Church in Ministry & Mission ∞

Sophomore Year

Fall Semester	15 hours
BIO 1113/PHY 1113	(Science option) ∞
HIS 1113	American History I ∞
COM 2223	Fundamentals of Visual Comm. ◇
BIB 2213	Bible Study ∞
XXX XXXX	(General Elective Course option 1)

Spring Semester	15 hours
ENG 2273/2243	(English option) ∞/◇ (ENG 2233, if preferred, is fall only) (prereq: ENG 1123)
LDR 1113	Intro to Leadership Internship ∞
COM 2213	Mass Communication in Society ◇
THE 2333	Pentecostal Doctrine & History ∞
XXX XXXX	(General Elective Course option 2)

Junior Year

Fall Semester	16 hours
LDR 2133	Leadership Internship I ◇
COM/MED	(Major Elective option 1)
XXX XXXX	(Humanities/Fine Arts Elective option)
THE 2213	Intro to Theology & Apologetics ∞
XXX XXXX	(General Elective Course option 3)

Spring Semester	15 hours
GOV 2213	National & State Government ∞
LDR 3133	Leadership Internship II ∞
REL 1133	Authentic Christianity ∞
THE 3133	Systematic Theology II ◇
MED 2413	Audio Production for Music ◇

Senior Year

Fall Semester	15 hours
CMN 3163	Leadership in Ministry ◇
MUS 3333	Church Music History ◇
MED 3283	Worship Technologies ◇
COM 3113	The Church and Media ◇
XXX XXXX	(General Elective Course option 4)

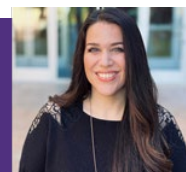
Spring Semester	17 hours
BIB 3233	Biblical Principles of Worship **
MUS 4123	Worship Leadership ◇ (Course offered online only)
COM/MED	(Major Elective option 2)
XXX XXXX	(General Elective Course option 5)
XXX XXXX	(General Elective Course option 6)
XXX XXXX	(General Elective Course option 7)

Please Note:

- This plan is one example of how to complete the degree in 4 years. It assumes no transfer credit and no developmental coursework. It will work for some, but not for all.
- You can meet with your scheduler, program coordinator, or department chair to plan around your circumstances and develop your personal degree path. Degree requirements and offerings are subject to change, so consult advisors for on-going updates.
- Course Offering Codes:
 - ∞ every fall and spring semester
 - * only that semester in odd years
 - *** to be taken *only* in specified semester
 - ◇ every year only fall/spring/summer (as listed)
 - ** only that semester in even years
 - ∞/◇ offering differs in order listed



Your Program Coordinator:
Meredith Jones, M.M.
Director of SAGU Worship
mjones@nelson.edu



Degree Path: B.A. in Worship Arts – Technical Arts

College of Music and Communication Arts

OVERVIEW

Worship Arts is a ministry preparation program fashioned in light of the leadership curriculum established in the College of Bible and Church Ministries. This is for the development of worship pastors who serve the musical needs of the Church, while serving as part of a pastoral team. In addition to the Bible core, the curriculum places an emphasis on both leadership and music courses and includes hands-on internship required credit hours.

CAREER OPPORTUNITIES

Because the Worship Arts degree is designed to prepare students for vocational ministry, most of our graduates go on to become worship pastors, music directors, or creative arts pastors. This degree program also has a significant emphasis on musical knowledge and an introduction to audio engineering training, which enables students to pursue the fields of music teaching, vocal coaching, songwriting, music performance, and audio production.

PROGRAM HIGHLIGHTS

The Worship Arts degree provides valuable training and preparation for students who want to pursue worship ministry. This program promotes a well-rounded approach to audio, visual, and communication ministries because of the multi-focus courses that both develop technical mastery and cultivate leadership abilities. Worship Leadership students have four internship courses built into the degree, which allow them to partner with local church worship departments.

Highlights of this degree include specialized courses, such as: Mass Communication in Society, The Church and Media, Audio Production for Music, Worship Technologies, and Biblical Principles of Worship.

Our students are taught by accomplished faculty with years of experience in vocational ministry and technical expertise.

PROGRAM REQUIREMENTS

GENERAL EDUCATION STUDIES 53 Hours

General Education: 14 hours

- ☐ COM 1143 Fundamentals of Speech Communication
- ☐ ENG 1113 Composition and Rhetoric I
- ☐ ENG 1123 Composition and Rhetoric II
- ☐ GES 1122 Strategies for Student Success
- ☐ 3 hours from the following:
 - ENG 2273 Introduction to Literature
 - ENG 2233 American Literature through Civil War
 - ENG 2243 American Literature after the Civil War

Social/Behavioral Sciences: 9 hours

- ☐ GOV 2213 National and State Government
- ☐ HIS 1113 American History I
- ☐ PSY 1153 Introduction to Psychology

Natural Science/Mathematics: 6 hours

- ☐ 3 hours from the following:
 - BIO 1113 Biological Sciences
 - PHY 1113 Physical Science
- ☐ 3 hours from the following:
 - MTH 1113 College Mathematics
 - MTH 1123 College Algebra

Humanities/Fine Arts: 4 hours

- ☐ 4 hours from the following:
 - MAP 1000 Applied Major area (Musical Arts)
 - Humanities/Fine Arts courses

Physical Education: 2 hours

- ☐ PED 2232 Wellness and Lifestyle

General Biblical Studies: 18 hours

- ☐ BIB 1223 The Church in Ministry and Mission
- ☐ BIB 2213 Bible Study
- ☐ REL 1133 Authentic Christianity
- ☐ REL 1173 Introduction to Biblical Literature
- ☐ THE 2113 Introduction to Theology and Apologetics
- ☐ THE 2333 Pentecostal Doctrine and History

MAJOR STUDIES 48 Hours

Core Studies: 30 hours

- ☐ BIB 3233 Biblical Principles of Worship
- ☐ CMN 3163 Leadership in Ministry
- ☐ CMN 3173 The Church and Media
- ☐ LDR 1113 Introduction to Leadership Internship
- ☐ LDR 2133 Leadership Internship I
- ☐ LDR 3133 Leadership Internship II
- ☐ MED 3283 Worship Technologies
- ☐ MUS 3333 Church Music History
- ☐ MUS 4123 Worship Leadership
- ☐ THE 3133 Systematic Theology II

Technical Arts Specialization: 18 hours

- ☐ COM 2213 Mass Communication in Society
- ☐ COM 2223 Fundamentals of Visual Communication
- ☐ MED 2123 Introduction to Media Production
- ☐ MED 2413 Audio Production for Music
- ☐ 6 hours from COM/MED or approved SSC

MINOR STUDIES/GENERAL ELECTIVES 20 Hours

Including at least six hours of upper-level courses. May include official minors or purely elective hours.

- ☐ 20 hours of student's choice

TOTAL PROGRAM REQUIREMENTS 121 Hours

